



# QUADRANT ULTRASLING®

## Immobilization Redefined

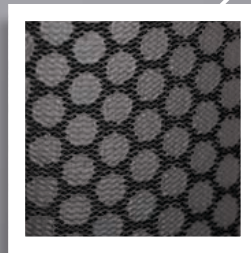
The UltraSling® Quadrant is a patent-pending, shoulder orthosis that provides four angles of immobilization in one brace for optimal versatility and inventory reduction. The UltraSling Quadrant – immobilization redefined.

Elbow opening to eliminate pressure on the olecranon bursa.



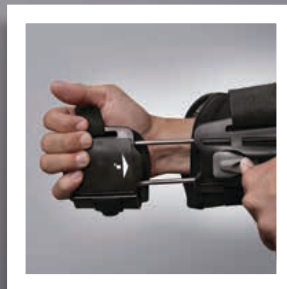
## TempGuard™

Cool-to-touch, anti-microbial material for extended duration of use.



## ProTherapy™

A precision-based system that allows the patient to flex and extend their arm, promoting therapeutic movement throughout recovery.



Optional shoulder strap



## Ease of Application

Patient-friendly, single-handed application improves the patient experience.



## Optimal Versatility

Whether post-operative or post-traumatic, the UltraSling Quadrant immobilizes the patient, and helps support a secure and functional recovery.

- IR** – Internal      **ER** – External
- AD** – Adduction    **AB** – Abduction



Indications: Soft-tissue strains; Anterior shoulder dislocation; Posterior shoulder dislocation; Non or minimally displaced proximal humerus fractures; Low-grade AC-Joint dislocations; Non or minimally displaced clavicle fractures; Brachial plexus injuries or other paralytic or neurologic injuries to the upper extremity; Pectoral tendon rupture and distal biceps rupture; Rotator cuff repairs; Bankart and capsular shift procedures; Bone block or Latarjet reconstructions for anterior shoulder instability; Shoulder replacement CRIF or ORIF of proximal humerus fractures; AC-Joint stabilization of acute and chronic; AC-Joint instabilities; Proximal biceps tenodesis, SLAP Repairs; ORIF clavicle fractures; reverse shoulder arthroplasty; Humeral shaft fractures; Scapular fractures; SC joint separation, UCL recon of the elbow and other elbow fracture indications.

Part Number	Waist Circumference	Part Description
11-0210	24" – 45" (61 – 114cm)	UltraSling Quadrant, RIGHT
11-0211	24" – 45" (61 – 114cm)	UltraSling Quadrant, LEFT
<i>Accessory</i>		
25-0212	45" – 60" (114 – 152cm)	Extension Belt

SIZING: Measure patient's waist circumference 1" (2.5cm) above belly button.

PDAC approved L3960



Individual results may vary. Neither DJO Global, Inc. nor any of its subsidiaries dispense medical advice. The contents of this brochure do not constitute medical, legal, or any other type of professional advice. Rather, please consult your healthcare professional for information on the courses of treatment, if any, which may be appropriate for you."

**DJO, LLC | A DJO Global Company**  
**T** 800.336.6569    **D** 760.727.1280    **F** 800.936.6569  
 1430 Decision Street | Vista, CA 92081-8553 | U.S.A.  
[DJOGlobal.com/donjoy](http://DJOGlobal.com/donjoy)

