



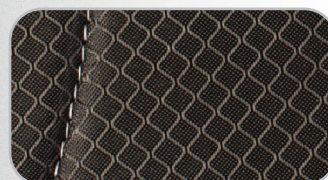
V-STX™

A patented, thermoformable material used with the posterior, anterior and lordotic inserts, allows for true customization and ideal patient fit.



ComfortCORE™ Foam

Conforms to the unique contours of a patient's body, adjusts instantly to individual movements and helps deliver improved patient comfort.



Diamond² Grid™

Nylon designed construct, helps deliver patients a durable, long-wearing brace.



BOA® Technology

Independent superior and inferior compression aid delivered through an innovative closure system.

Adjustable Belt Wings

Modifiable belt accommodates varying patient body structures for optimal fit.

Modular Design

Step-up / Step-down design allows for single brace use through rehabilitation and recovery.

Semi-Universal Sizing

Removable circumference tape allows for accurate patient sizing.



ORDERING INFORMATION

SIZING GUIDE WAIST CIRCUMFERENCE

DESCRIPTION	Exos® FORM™ II 637	Exos® FORM™ II 631	Exos® FORM™ II 627	Exos® FORM™ II 626	Exos FORM II 623	Exos® FORM™ II 621
S/M	25" - 49" (63cm - 125cm)	25" - 49" (63cm - 125cm)	25" - 49" (63cm - 125cm)	25" - 49" (63cm - 125cm)	28" - 50" (71cm - 127cm)	less than 35" (89 cm)
L/XL	49" - 60" (125cm - 152cm)	49" - 60" (125cm - 152cm)	49" - 60" (125cm - 152cm)	49" - 60" (125cm - 152cm)	51" - 61" (130cm - 155cm)	36" - 55" (91 cm - 140 cm)

EXOS® FORM™ II SPINE BRACING SYSTEM

PART NO.	DESCRIPTION	SIZE
300621-40	EXOS® FORM™ II 621	S/M
300621-60	EXOS® FORM™ II 621	L/XL
300623-40	EXOS® FORM™ II 623	S/M
300623-60	EXOS® FORM™ II 623	L/XL
300626-40	EXOS® FORM™ II 626	S/M
300626-60	EXOS® FORM™ II 626	L/XL
300627-40	EXOS® FORM™ II 627	S/M
300627-60	EXOS® FORM™ II 627	L/XL
300631-40	EXOS® FORM™ II 631	S/M
300631-60	EXOS® FORM™ II 631	L/XL
300637-40	EXOS® FORM™ II 637	S/M
300637-60	EXOS® FORM™ II 637	L/XL

EXOS® FORM™ II SPINE BRACING ACCESSORIES

PART NO.	DESCRIPTION	SIZE
900-631-40	POSTERIOR T9 PANEL	S/M
900-631-60	POSTERIOR T9 PANEL	L/XL
900-637-40	LATERAL EXTENSIONS	S/M
900-637-60	LATERAL EXTENSIONS	L/XL
900-AP-40	ANTERIOR PANEL	S/M
900-AP-60	ANTERIOR PANEL	L/XL
900-1-WINGS-40	BELT WING SET	S/M
900-1-WINGS-60	BELT WING SET	L/XL
900-1-BWING-40	BRIDGE WING	S/M
900-1-BWING-60	BRIDGE WING	L/XL
900-1-INSERT-40	LORDOTIC INSERTS	S/M
900-1-INSERT-60	LORDOTIC INSERTS	L/XL
900-JITT	SI BELT PAD SET	UNIVERSAL
900-POSTPAD-40	POSTERIOR T9 PANEL PADDING	S/M
900-POSTPAD-60	POSTERIOR T9 PANEL PADDING	L/XL
900-ANTPAD-40	ANTERIOR PANEL PADDING	S/M
900-ANTPAD-60	ANTERIOR PANEL PADDING	L/XL
900-HOTCOLD-40	HOT/COLD PACK ACCESSORY	S/M
900-HOTCOLD-60	HOT/COLD PACK ACCESSORY	L/XL

Embrace the Reform



Patented
Copyright © 2021 by DJO, LLC
Individual results may vary. Neither DJO Global, Inc. nor any of its subsidiaries dispense medical advice. The contents of this brochure do not constitute medical, legal, or any other type of professional advice. Rather, please consult your healthcare professional for information on the courses of treatment, if any, which may be appropriate for you.
BOA® is a registered trademark of BOA Technology, Inc.



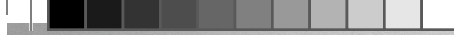
MKT00-3622 Rev D



EXOS® Form™ II Spine Bracing System

Reshaping Form, Fit and Function





EXOS® Form™ II

EXOS® Form™ II Spine Bracing System

EXOS® Form II is designed with patented thermoformable VST-X™ material for true customization, ComfortCORE™ Foam that contours to the patient's body, Diamond² Grid™ construct for a durable, long-wearing brace and BOA® Technology's closure system. The end result is a spine brace that helps deliver decompression and support, a quick and easily customizable fit, and helps provide patient comfort and satisfaction by reshaping form, fit and function.



EXOS® FORM™ II 627

The EXOS® FORM™ II 627 (with anterior panel) helps provide relief from mild to acute low back pain associated with various conditions, as well as post-operative support.

PART NO.	DESCRIPTION
300627-40	EXOS® FORM™ II 627, S/M
300627-60	EXOS® FORM™ II 627, L/XL

PDAC Assigned Code: L0627 (CST) / L0642 (OTS)



EXOS® FORM™ II 626

The EXOS® FORM™ II 626 helps provide relief from mild lower back pain. The Exos® FORM™ II 626 provides superior sagittal control and support from L-1 to L-5.

PART NO.	DESCRIPTION
300626-40	EXOS® FORM™ II 626, S/M
300626-60	EXOS® FORM™ II 626, L/XL

PDAC Assigned Code: L0626 (CST) / L0641 (OTS)



EXOS® FORM™ II 637

The EXOS® FORM™ II 637 (with lateral extensions) provides a higher degree of spinal support post-operatively and helps relieve lower back pain associated with various conditions. The Exos FORM™ II 637 provides superior sagittal and coronal control and support from T9-S1.

PART NO.	DESCRIPTION
300637-40	EXOS® FORM™ II 637, S/M
300637-60	EXOS® FORM™ II 637, L/XL

PDAC Assigned Code: L0637 (CST) / L0650 (OTS)



EXOS® FORM™ II 623

The EXOS® FORM™ II 623 helps provide superior stabilization of the sacroiliac (SI) joint through direct compression. The lacing fit system and the anterior panel help provide added support. Silicone grip strips prevent the brace from migrating.

PART NO.	DESCRIPTION
300623-40	EXOS® FORM™ II 623, S/M
300623-60	EXOS® FORM™ II 623, L/XL

PDAC Assigned Code: L0623



EXOS® FORM™ II 631

The EXOS® FORM™ II 631 provides spinal support post-operatively and helps relieve lower back pain associated with various conditions. The Exos® FORM™ II 631 provides superior sagittal control and support from T9-S1.

PART NO.	DESCRIPTION
300631-40	EXOS® FORM™ II 631, S/M
300631-60	EXOS® FORM™ II 631, L/XL

PDAC Assigned Code: L0631 (CST) / L0648 (OTS)



EXOS® FORM™ II 621

The EXOS® FORM™ II 621 provides superior stabilization of the sacroiliac (SI) joint through direct compression. Silicone grip strips prevent the brace from migrating.

PART NO.	DESCRIPTION
300621-40	EXOS® FORM™ II 621, S/M
300621-60	EXOS® FORM™ II 621, L/XL

PDAC Assigned Code: L0621

FOR USE WITH

	Sacroium	Sacroium	L1 - L5	L1 - L5	T9 - S1	T9 - S1
	EXOS® FORM™ II 621	EXOS® FORM™ II 623	EXOS® FORM™ II 626	EXOS® FORM™ II 627	EXOS® FORM™ II 631	EXOS® FORM™ II 637
Sacroiliac Pain	●	●				
Acute and Chronic Lower Back Pain			●	●	●	●
Lower Back Sprains / Strains			●	●	●	●
Lumbar Disc Displacement			●	●	●	●
Osteoporosis			●	●	●	●
Disc Herniation and Degeneration			●	●	●	●
Post-Operative Laminectomy			●	●	●	●
Post-Operative Disectomy			●	●	●	●
Spondylolisthesis			●	●	●	●
Post-Operative Fusion					●	●
Spinal Stenosis					●	●
Stable / Non-Displaced Fractures					●	●

RANGE OF SPINAL SUPPORT

